

AMERICAN ASSOCIATION  
FOR THE  
HISTORY OF MEDICINE



Faculty of  
*Louisville Medical Institute*  
1837—1838



LUNSFORD PITTS YANDELL, DEAN



CHARLES CALDWELL



HENRY MILLER



JOHN ESTEN COOKE



JOSHUA BARKER FLINT



JEDEDIAH COBB



Printed on recycled paper.

Printed by the University of Louisville  
Publications and Printing Services

SIXTY-SIXTH  
ANNUAL MEETING  
LOUISVILLE, KENTUCKY  
MAY 13-16, 1993



## HOST INSTITUTIONS

University of Louisville, School of Medicine  
The Innominate Society of Louisville

## COVER

A composite of portraits of the first faculty of the Louisville Medical Institute established in 1837.

### **Lunsford Pitts Yandell, Sr., M.D.**

(University of Maryland, 1825)  
Dean, Professor of Materia Medica,  
and Lecturer in Chemistry

### **Henry Miller, M.D.**

(Transylvania, 1822)  
Professor of Obstetrics and Diseases of Women and  
Children

### **Charles Caldwell, M.D.**

(University of Pennsylvania, 1793)  
Professor of the Institutes of Medicine and Clinical  
Practice and Medical Jurisprudence

### **John Esten Cooke, M.D.**

(University of Pennsylvania, 1805)  
Professor of the Theory and Practice of Medicine

### **Joshua Barker Flint, M.D.**

(Harvard, 1825)  
Professor of Surgery

### **Jedediah Cobb, M.D.**

(Bowdoin, 1823)  
Professor of Anatomy

Reproduced from E.F. Horine, "A History of the Louisville Medical Institute...." *The Filson Club History Quarterly* (1933) 7:132-147.

## REGISTRATION

A packet of materials for each registrant, including name badge and tickets, is available at the Convention Registration Desk, 2nd floor foyer of Galt House East. The desk will be staffed Thursday (13 May) from 5 P.M. to 9 P.M., Friday (14 May) 7:30 A.M. to 4 P.M., and Saturday (15 May) from 9 A.M. to 1 P.M. It is requested that badges be worn at all times. Tickets will be required for the Writing Workshop, all Luncheon Workshops, and the Annual Banquet. The Garrison Lecture and Reception will be held at the University of Louisville HSC Library and Commons Building; bus transportation from the hotel (and return) will be provided.

## SESSIONS

Plenary sessions will be held in the Cochran Room, 3rd floor of the **Galt House**, just at the end of the enclosed River View Walkway from the 2nd floor of the Galt House East. For concurrent sessions, the meeting rooms have been identified on the program and can be located on the map in the centerfold of this program. All other meeting rooms are in the Galt House East on either the 1st or 2nd floors.

## BOOK EXHIBIT

A combined exhibit of antiquarian books and recent publications in the history of medicine will be presented in the Carroll and Ford Rooms on the 2nd floor of Galt House East. Hours: Friday, 9 A.M.- 4:30 P.M., Saturday, 9 A.M. - 3 P.M. A list of the exhibitors appears on page 38 of this program and on the bound list of books of antiquarian dealers and publishers included in your registration packet.

## POSTER EXHIBITS

(Foyer, outside Grand Ballroom, 2nd floor, Galt House East)

Friday, 10 A.M. - 4 P.M.  
The Medical Museum Association  
GLEN W. DAVIDSON

Saturday, 10 A.M. - 4 P.M.  
William [Old] Forrester, M.D.  
MERVEL V. HANES

## VIDEO EXHIBITS

(Anchor, 3rd floor, **Galt House**)  
Friday and Saturday, 10 A.M. - 4 P.M.



**AAHM COUNCIL**

The Council will meet 4:30 P.M. to 6:30 P.M. Thursday, 13 May 1993, in the Brown Room, 2nd floor, Galt House East.

**ASSOCIATED MEETINGS**

- 11-13 May The American Osler Society,  
Galt House East
- 13 May Archivists and Librarians in the  
History of the Health Sciences,  
Community Health Building (Old  
Medical School), First and Chestnut  
Streets.
- 13 May Anesthesia History Association, Galt  
House
- 13 May Medical Museums Association (tba)
- 13 May Sigerist Circle, 2 P.M. – 4:30 P.M.,  
Sampson Room, Galt House East
- 15 May Medical Philately Division of  
American Topical Association  
12 Noon- 1:00 P.M.,  
Kent/Turf Room, 2nd floor,  
**Galt House**

**CREDIT**

The University of Louisville School of Medicine is accredited by the Accreditation Council for Continuing Medical Education to sponsor continuing medical education for physicians. The University of Louisville Office of Continuing Medical Education designates this continuing medical education offering for 15 credit hours in Category I of the Physician's Recognition Award of the American Medical Association.

**PROGRAM**

Note: All AAHM activities will be held in Galt House East, our headquarters hotel, except as specifically indicated in the program.

**THURSDAY, 13 MAY 1993**

- 8:00 A.M.–4:30 P.M. ✓ WRITING WORKSHOP —  
Todd L. Savitt  
(Willis and Johnson, 2nd floor;  
Luncheon, Laffoon, 1st floor.)
- 2:00 P.M.–4:30 P.M. SIGERIST CIRCLE MEETING —  
Theodore M. Brown  
(Sampson, 1st floor)
- 4:30 P.M.–6:30 P.M. AAHM COUNCIL MEETING  
(Brown, 2nd floor)
- 7:30 P.M.–10:00 P.M. AAHM COUNCIL MEETING  
continues (Brown, 2nd floor).
- 5:00 P.M.–9:00 P.M. REGISTRATION —  
Convention Registration, 2nd floor
- 6:00 P.M.–8:00 P.M. RECEPTION with Cash Bar  
(Grand Ballroom)
- 8:00 P.M.–9:30 P.M. FILM PRESENTATION:  
“Coppermine: Consequences of  
Contact with the Outside”  
(West Section of Grand Ballroom)
- A film prepared by the National Film  
Board of Canada. Walter J. Vanast,  
a consultant for the project, will be  
present at the showing.
- 8:00 P.M.–10:00 P.M. STUDENT HISTORIANS OF  
HEALTH CARE AND ALLIED  
SCIENCES —  
Walton O. Schalick, III  
(Governors, 2nd floor)

## FRIDAY, 14 MAY 1993

- 7:00 A.M.–8:30 A.M. BREAKFAST MEETING OF CLINICIAN-HISTORIANS (Brown, 2nd floor)
- 7:45 A.M.–8:30 A.M. CONTINENTAL BREAKFAST (Outside Cochran, 3rd floor, **Galt House**)  
*Compliments of Baptist Hospital East.*
- 7:30 A.M.–4:00 P.M. REGISTRATION (Convention Registration, 2nd floor)
- 9:00 A.M.–4:30 P.M. BOOK EXHIBIT (Carroll and Ford, 2nd floor)
- 10:00 A.M.–4:00 P.M. POSTER EXHIBIT (Foyer, outside Grand Ballroom, 2nd floor)  
The Medical Museums Association  
GLEN W. DAVIDSON,  
PHILLIP V. DAVIS, and  
MARY ELLEN McELLIGOTT
- 10:00 A.M.–4:00 P.M. VIDEO EXHIBIT (Anchor, 3rd floor, **Galt House**)  
The "Pap" Test: Homage to George Nicholas Papanicolou  
J. LEE SEDWITZ
- 8:30 A.M.–10:00 A.M. PLENARY SESSION (Cochran, 3rd floor, **Galt House**)  
Charles E. Rosenberg, presiding
- 8:30 A.M. Welcome  
ARTHUR H. KEENEY, Co-Chair,  
Local Arrangements Committee  
  
DONALD R. KMETZ,  
Dean, University of Louisville,  
School of Medicine  
  
EDWARD L. W. SCOFIELD,  
Pres., Innominate Society  
  
NANCY J. TOMES,  
Chair, Program Committee
- 8:45 A.M. Presentations  
  
The Language of Vesalius:  
Translating *De humani corporis fabrica*  
DANIEL H. GARRISON and  
MALCOLM H. HAST  
  
Reinterpreting Paris Medicine  
CAROLINE HANNAWAY and  
ANN LA BERGE  
  
Comment  
JOHN HARLEY WARNER
- 10:00 A.M.–10:30 A.M. REFRESHMENT BREAK (Return to Galt House East)
- 10:30 A.M.–12:00 P.M. THREE CONCURRENT SESSIONS  
  
SESSION A (Combs/Chandler, 2nd floor)  
  
10:30 A.M. The "Secret" of Success: Obstetrical Forceps as Portrayed by the Collection at the College of Physicians of Philadelphia  
DOROTHY I. LANSING and  
W. ROBERT PENMAN  
  
11:00 A.M. Confounding Medical and Social Prescriptions: The Sterilization of Women for Heart Disease and Tuberculosis, 1915-1937  
BARRON H. LERNER  
  
11:30 A.M. Fetal Behavior: The Hooker Studies  
JONATHAN D. K. TRAGER and  
SYLVAN E. STOOL  
  
SESSION B (Clements, 2nd floor)  
  
10:30 A.M. Between "Philippinitis" and "Germ-Mania": Disease, Madness, and the New Tropical Medicine  
WARWICK ANDERSON



- 11:00 A.M. ✓ "The Tender Frame of Man":  
Medical Men and the  
Acclimatization Question,  
1760-1840  
MARK HARRISON
- 11:30 A.M. ✓ The Medicine of the Hot Countries  
and the Development of French  
Algeria  
MICHAEL A. OSBORNE
- SESSION C  
(Breathitt, 2nd floor) BIOGRAPHY AND  
MEDICAL HISTORY  
Theodore M. Brown, presiding
- 10:30 A.M. The War Horse of Cumberland:  
The Life of Sir Charles Tupper  
T. J. MURRAY and  
JANET MURRAY
- 11:00 A.M. Davison's Dream: The International  
Health Program of the League of  
Red Cross Societies, 1919-1929  
JOHN F. HUTCHINSON
- 11:30 A.M. ✓ "Go Tell It On the Mountain": Hilla  
Sheriff and Public Health in the  
South Carolina Piedmont, 1933-1940  
PATRICIA EVRIDGE HILL
- 12:15 P.M.-1:25 P.M. LUNCHEON WORKSHOPS
- WORKSHOP A  
(Laffoon, 1st floor) A Discussion of Two NEH-  
Sponsored Research Projects:  
A Biography of Ivan Pavlov and a  
Comparative History of Medical  
Education, or "Dan and Tom's  
Excellent Adventures in European  
Archives"  
Daniel P. Jones, Moderator  
DANIEL P. TODES  
THOMAS NEVILLE BONNER
- WORKSHOP B  
(Johnson, 2nd floor) Early Medicine Interest Group  
Michael McVaugh and Ann  
Carmichael, Moderators

- WORKSHOP C  
(Sampson, 1st floor) Documenting the History of AIDS  
Victoria A. Harden, Moderator  
SALLY SMITH HUGHES  
STEPHEN B. THOMAS  
SANDRA CROUSE QUINN  
EDWARD C. ATWATER  
CAROLINE HANNAWAY
- 1:30 P.M.-3:00 P.M. THREE CONCURRENT  
SESSIONS
- SESSION A  
(Clements, 2nd floor) CLINICAL TRIALS  
Susan E. Lederer, presiding
- 1:30 P.M. Simple Methods: The Scientific  
Evaluation of Fertility Control,  
1958-68  
MARCIA L. MELDRUM
- 2:00 P.M. A Tempest in a Tube: Crest  
Toothpaste and Professional  
Dentistry  
ELIZABETH E. HUNT
- 2:30 P.M. The Canadian Connection:  
Poliomyelitis Research, Connaught  
Laboratories, and the Salk Vaccine,  
1947-1955  
CHRISTOPHER J. RUTTY
- SESSION B  
(Combs/Chandler,  
2nd floor) MIDWIVES AT WORK  
Susan M. Reverby, presiding
- 1:30 P.M. Midwives at Work: Providing  
Abortions  
LESLIE J. REAGAN
- 2:00 P.M. ✓ The Vital Link: African-American  
Midwives and Public Health Work  
SUSAN L. SMITH
- 2:30 P.M. ✓ Neighborly Women Catching  
Babies: Rural Women and the  
Domestic Image of Midwifery  
CHARLOTTE G. BORST
- SESSION C  
(Breathitt, 2nd floor) CIVIL WAR EXPERIENCES  
James O. Breeden, presiding
- 1:30 P.M. ✓ The Medical Care of Black Civil  
War Soldiers  
JAMES M. CHALKER

- 2:00 P.M. In Service of the Fifth Wheel:  
Katharine Prescott Wormeley and  
Her Experience in the United States  
Sanitary Commission  
JUDITH GIESBERG-FIERROS
- 2:30 P.M. The Confederate Mobile Army  
Hospital System in Response to  
Sherman's Atlanta Campaign  
F. TERRY HAMBRECHT and  
JODI KOSTE
- 3:00 P.M.—3:15 P.M. BREAK
- 3:15 P.M.—4:15 P.M. THREE CONCURRENT  
SESSIONS
- SESSION A CHILDREN'S HEALTH CARE  
(Combs/Chandler, Peter English, presiding  
2nd floor)
- 3:15 P.M. Bittersweet: The Transformation of  
Diabetes Mellitus from an Acute to a  
Chronic Illness During the 20th c.  
CHRIS FEUDTNER
- 3:45 P.M. Seeking Health Care for Children:  
Contestation Between Mothers and  
Public Officials During the 1930s  
EMILY K. ABEL
- SESSION B WORKING-PEOPLE'S HEALTH  
(Breathitt, 2nd floor) CARE  
Donald L. Madison, presiding
- 3:15 P.M. The Medical Economy of the  
Working Class in 19th c. Britain  
JAMES C. RILEY
- 3:45 P.M. Conserving Life and Limb Before  
Blue Cross: Workmen's  
Compensation and Prepaid Medical  
Practice in Washington State  
NANCY ROCKAFELLAR
- SESSION C THERAPEUTICS EAST  
(Clements, 2nd floor) AND WEST  
Matthew Ramsey, presiding
- 3:15 P.M. Beriberi in China: A Perspective on  
Nutritional Health and Disease in  
Chinese Society  
ARLINE T. GOLKIN

- 3:45 P.M. Was There a Distinctive Vitalist  
Therapeutics? The Case of  
Montpellier  
ELIZABETH A. WILLIAMS
- 4:30 P.M.—5:00 P.M. Coaches to University of Louisville  
School of Medicine (board at Fourth  
Street entrance of hotel)
- 5:00 P.M.—6:00 P.M. THE FIELDING H. GARRISON  
LECTURE  
(University of Louisville  
School of Medicine)  
Charles E. Rosenberg, presiding
- A Dangerous Occupation? The  
Historian as Reformer  
and Policy Maker  
ROSEMARY A. STEVENS
- 6:30 P.M.—8:00 P.M. RECEPTION  
University of Louisville  
School of Medicine, HSC  
Kornhauser Library and  
Commons Building
- 7:00 P.M.—8:30 P.M. Coaches to Dinner Cruise/Hotel
- 7:30 P.M.—10:30 P.M. DINNER CRUISE (Optional)

## SATURDAY, 15 MAY 1993

- 7:30 A.M.—8:30 A.M. Breakfast for Editorial Board,  
*Bulletin of the History of Medicine*  
(Susan L. Abrams)  
(Johnson, 2nd floor)
- 7:30 A.M.—8:30 A.M. Breakfast for New Members of  
AAHM,  
Charles Rosenberg, presiding  
(Brown, 2nd floor)
- 8:00 A.M.—9:00 A.M. Complimentary coffee, tea, and juice  
(In front of Convention Registration,  
2nd floor)
- 9:00 A.M.—1:00 P.M. REGISTRATION —  
Convention Registration, 2nd floor
- 9:00 A.M.—3:00 P.M. BOOK EXHIBIT  
(Carroll and Ford, 2nd floor)



- 10:00 A.M.—4:00 P.M. POSTER EXHIBIT  
(Foyer, outside Grand Ballroom, 2nd floor)  
William [Old] Forrester, M.D.  
MERVEL V. HANES
- 10:00 A.M.—4:00 P.M. VIDEO EXHIBITS  
(Anchor, 3rd floor, **Galt House**)  
“Ephraim McDowell’s Kentucky Ride”  
Primetime Live: “The Tuskegee Experiment” and “Nova: Deadly Deception”
- 9:00 A.M.—10:30 A.M. THREE CONCURRENT SESSIONS
- SESSION A  
(Combs/Chandler, 2nd floor)
- 9:00 A.M. The Practice of Obstetrics in Rural New England, 1800-1860  
PAUL BERMAN
- 9:30 A.M. Constancy, Continuity, and Curiosity: A Reassessment of the “Low Estate” of 19th-c. American Doctors  
WALTER J. VANAST
- 10:00 A.M. Cases, Notes, and the Physician’s Narrative of Work in the American South, 1830-1880  
STEVEN M. STOWE
- SESSION B  
(Clements, 2nd floor)
- 9:00 A.M. Trick or Treat? Women, the Rockefeller Foundation, and Public Health in Mexico, 1924-52  
ANNE-EMANUELLE BIRN
- 9:30 A.M. Unexpected Consequences: The Rockefeller Agenda for American/Philippine Nursing Relations  
BARBARA L. BRUSH

- 10:00 A.M. How International Was the International Health Division?  
JOHN FARLEY
- SESSION C  
(Breathitt, 2nd floor)
- NEW WORLDS,  
NEW MEDICINES  
Thomas G. Benedek, presiding
- 9:00 A.M. The European Reception of Drugs from the New World  
J. WORTH ESTES
- 9:30 A.M. Seventeenth-century Europeans Encounter Asian Medicine: The Case of Willem Ten Rhijne  
HAROLD J. COOK
- 10:00 A.M. The Snakestone Experiments: a 17th-c. Toxicological Controversy  
MARTHA BALDWIN
- 10:30 A.M.—11:00 A.M. REFRESHMENT BREAK
- 11:00 A.M.—12:00 P.M. THREE CONCURRENT SESSIONS
- SESSION A  
(Combs/Chandler, 2nd floor)
- GENDER DIFFERENCES AND HEALTH CARE  
Nancy M. Theriot, presiding
- 11:00 A.M. Prescription by Gender: The Case of Consumption in 19th c. America  
SHEILA M. ROTHMAN
- 11:30 A.M. Women’s Physical Education and the Science of Sex Differences in America, 1880-1940  
MARTHA H. VERBRUGGE
- SESSION B  
(Breathitt, 2nd floor)
- HOSPITALS AND HEALTH CARE PROFESSIONS  
Barbara Brodie, presiding
- 11:00 A.M. The Beginnings of Symbiosis: Anesthesiologists’ and Surgeons’ Changing Relationship in the 1920s and 1930s  
DOUGLAS R. BACON
- 11:30 A.M. The Revolving Hospital Door: Nursing Work Patterns and Their Implications, 1950-1960  
JULIE FAIRMAN

SESSION C  
(Clements, 2nd floor) PUBLIC HEALTH AND THE LAW  
Bert Hansen, presiding

11:00 A.M. Public Health and Public Law in  
19th. c. America  
WILLIAM J. NOVAK

11:30 A.M. "A Really Excellent Contribution to  
a Subject of Great Importance": The  
Chicago Drainage Case and Typhoid  
Prevention, 1900-1906  
CAROLYN G. SHAPIRO

12:15 P.M.-1:25 P.M. LUNCHEON WORKSHOPS

WORKSHOP A Teaching Issues of Race and  
(Laffoon, 1st floor) Racism in the History of Medicine  
Curriculum  
VANESSA NORTHINGTON  
GAMBLE

WORKSHOP B Meet the Author of *Strangers at the*  
(Johnson, 2nd floor) *Bedside: A History of How Law and*  
*Ethics Transformed Medical*  
*Decision-Making*  
DAVID J. ROTHMAN

WORKSHOP C The Network Environment:  
(Brown, 2nd floor) What's In It For You?  
Sponsored by the Archivists and  
Librarians in the History of the  
Health Sciences  
Inci A. Bowman, Moderator  
PETER B. HIRTLE  
JOEL D. HOWELL  
PEGGY STEELE

1:30 P.M.-3:00 P.M. THREE CONCURRENT  
SESSIONS

SESSION A PANEL DISCUSSION OF *FATAL*  
(Combs/Chandler, 2nd floor) *YEARS: DEMOGRAPHY AND*  
*HISTORY AROUND 1900*  
Harry M. Marks, presiding  
Panel Discussants:

1:30 P.M. What Preston and Haines Tell Us  
That We Didn't Already Know  
GRETCHEN CONDRAN

1:50 P.M. Judging Progressive-Era Infant  
Welfare in Light of *Fatal Years* —  
and Vice Versa  
RICHARD MECKEL

2:10 P.M. *Fatal Years: Some Comparative and*  
Conceptual Questions  
GERRY KEARNS

2:30 P.M. Responses and Future Directions for  
Research  
MICHAEL HAINES and SAMUEL  
PRESTON

SESSION B KENTUCKY HISTORY  
(Breathitt, 2nd floor) Porter Mayo, presiding

1:30 P.M. William Stout Chipley and the  
Evolution of the Medical  
Superintendency in Kentucky,  
1855-1869  
RONALD F. WHITE

2:00 P.M. Medical Care of the Freedpersons in  
Kentucky  
RALPH C. GORDON

2:30 P.M. Linda Neville and the Development  
of Public Health in Kentucky  
JUDY G. CORNETT

SESSION C NEW METHODS OF  
(Clements, 2nd floor) ANALYZING MEDICAL TEXTS  
Guenter Risse, presiding

1:30 P.M. The Body in Question: Obstetrics  
and Gynecology in Early Modern  
Japan  
SUSAN L. BURNS

2:00 P.M. Syndromes as Medical "Fictions":  
The Case of the Cursing Marquis  
and the (Re)Construction of Gilles  
de la Tourette's Syndrome  
HOWARD I. KUSHNER

2:30 P.M. Medical Journals and *L'Histoire du*  
*Livre: The Example of 19th-c.*  
Canada  
JENNIFER J. CONNOR

3:00 P.M.-3:30 P.M. REFRESHMENT BREAK



- 3:30 P.M.-4:30 P.M. THREE CONCURRENT SESSIONS
- SESSION A  
(Breathitt, 2nd floor) THERAPEUTICS AND THE BRAIN  
James Tait Goodrich, presiding
- 3:30 P.M. Treatment of the Open Brain Wound in America, 1820-1880  
FRED G. BARKER, II
- 4:00 P.M. Aneurysmal Subarachnoid Hemorrhage: From Case Reports to Randomized Clinical Trials to Molecular Genetics  
EUGENE S. FLAMM
- SESSION B  
(Clements, 2nd floor) MEDICAL CONTROVERSIES  
Janet A. Tighe, presiding
- 3:30 P.M. The Sequin Family Tragedy: Personal and Professional Issues in New York Neurology  
BONNIE ELLEN BLUSTEIN
- 4:00 P.M. Dr. Roswell Park and the McKinley Assassination  
MICHAEL L. PALMER, ROBERT WEISS, and LILLI SENTZ
- SESSION C  
(Combs/Chandler, 2nd floor) CHEMICALS AND THE DANGER TO HEALTH  
Christopher Hamlin, presiding
- 3:30 P.M. "The Death-Dealing Smog Over Donora, Pennsylvania": Industrial Medicine, Community Health, and the Federal Discovery of Air Pollution, 1948-1956  
LYNNE PAGE SNYDER
- 4:00 P.M. "Chemicals Don't Have Rights": James J. Delaney and the Delaney Anti-Cancer Clause  
SUZANNE R. WHITE
- 4:45 P.M.-6:00 P.M. ANNUAL BUSINESS MEETING  
(West Grand Ballroom, 2nd floor)

- 6:30 P.M.-6:45 P.M. Coaches to banquet at Kentucky Derby Museum, Churchill Downs (board at Fourth Street entrance of hotel)
- 6:45 P.M. Arrival, Cocktails, Cash Bar
- 7:30 P.M. BANQUET
- 8:30 P.M. AWARDS  
Charles E. Rosenberg, presiding  
Student Essay Awards:  
William Osler Medal  
Richard Shryock Medal  
Continuing Lifetime Achievement Award  
William H. Welch Award
- 9:30 P.M. Coaches return to hotel

**SUNDAY, 16 MAY 1993**

- 7:30 A.M.-9:00 A.M. Postmortem Breakfast  
(Brown, 2nd floor)
- 8:00 A.M.-9:00 A.M. Complimentary Continental Breakfast  
(Second floor foyer in front of Convention Registration)
- 9:00 A.M.-10:30 A.M. THREE CONCURRENT SESSIONS
- SESSION A  
(Combs/Chandler, 2nd floor) PLAGUES AND POLITICS  
Judith Walzer Leavitt, presiding
- 9:00 A.M. Their Numbers Become Thinned? Vaccination Among the Ojibwe, 1832  
SANDRA A. JAHN
- 9:30 A.M. "Layers of Separation": Cholera, Public Health, Quarantines, and Politics in New York City of 1892  
HOWARD MARKEL
- 10:00 A.M. A Matter of Opinions: The Negotiation of Plague in Cape Town, Hong Kong, and Glasgow, 1900-1902  
MOLLY SUTPHEN



- SESSION B  
(Nunn, 2nd floor) MEDICAL EDUCATION  
Gert H. Brieger, presiding
- 9:00 A.M. The Clinical Impulse and National Responses in Europe and North America, 1780-1830  
THOMAS NEVILLE BONNER
- 9:30 A.M. The Navy Medical School in Philadelphia: An Experiment in 19th c. Professional Education  
HAROLD D. LANGLEY
- 10:00 A.M. What Should a Medical School Be? The Early Years of Tufts College Medical School (1893-1920)  
PHILIP CASH and CLARK T. SAWIN

- SESSION C  
(Clements, 2nd floor) PSYCHIATRY, PSYCHOLOGY AND 20th C. AMERICAN CULTURE  
Nathan Kravis, presiding
- 9:00 A.M. Children and Child Psychiatrists in the 1930s: Listening to the Records  
KATHLEEN W. JONES
- 9:30 A.M. Medicine for Moderns: Physicians, Psychologists, and Psychosomatic Medicine in the 1930s  
WADE E. PICKREN
- 10:00 A.M. Metaphorical Dimensions of Childhood Autism  
W.R. ALBURY

10:30 A.M.—11:00 A.M. REFRESHMENT BREAK

11:00 A.M.—12:30 P.M. THREE CONCURRENT SESSIONS

- SESSION A  
(Clements, 2nd floor) MEDIEVAL MEDICINE  
Cornelius O'Boyle, presiding
- 11:00 A.M. The Relevance of Futility: Jordanus de Turre (Fl. 1313-1335) on the Treatment of Leprosy  
LUKE E. DEMAITRE

- 11:30 A.M. Add one part medicine to one part pharmacy and one part surgery: Jean de Saint-Amand and the Development of Medical Pharmacology in Late 13th c. Paris  
WALTON O. SCHALICK, III

- 12:00 P.M. Physiological and Psychological Aspects of Medieval Asceticism  
JEROME KROLL and BERNARD BACHRACH

SESSION B  
(Combs/Chandler, 2nd floor) RACE, MEDICAL SCIENCE, AND IDENTITY  
Todd Savitt, presiding

- 11:00 A.M. Teaching Race: Education at the Woman's Medical College, 1850-1900  
CHARLES B. MAÇMARTIN

- 11:30 A.M. Jewish Scientists and the Science of Race at the *Fin-de-siècle*  
JOHN MAURICE EFRON

- 12:00 P.M. The Science of Colonialism: Psychiatry's Definition of the "African Mind" in Colonial Nigeria  
JONATHAN SADOWSKY

SESSION C  
(Nunn, 2nd floor) THE HISTORY OF MEDICAL ETHICS  
Arthur H. Keeney, presiding

- 11:00 A.M. Ethics in the Medical Writings of Moses Maimonides  
DAVID L. FREEMAN

- 11:30 A.M. Bad Food and Bug Bites: Medical Experimentation on American Prisoners in the Early 20th c.  
JON M. HARKNESS

- 12:00 A.M. The Contemporary History of 20th c. Medical Ethics  
GERALD G. OSBORN



## PROGRAM PARTICIPANTS

Emily K. Abel, M.P.H., Ph.D.

Associate Professor

UCLA School of Public Health

Los Angeles, California 90024-1772

W.R. Albury, Ph.D.

Professor of History and Philosophy of Science

School of Science and Technology Studies

University of New South Wales

Kensington, New South Wales 2033 Australia

Warwick Anderson, M.B.B.S., Ph.D.

Assistant Professor of the History of Science

Harvard University

Cambridge, Massachusetts 02138

Edward C. Atwater, M.D.

Professor of Medicine, Emeritus

University of Rochester School of Medicine and Dentistry

Rochester, New York 14642

Bernard Bachrach, Ph.D.

Professor of History

University of Minnesota

Minneapolis, Minnesota 55455

Douglas R. Bacon, M.D.

Assistant Professor of Anesthesiology

State University of New York at Buffalo

Buffalo, New York 14263-0001

Martha Baldwin, Ph.D.

Teaching Assistant

Department of the History of Science

Harvard University

Cambridge, Massachusetts 02138

Fred G. Barker II, M.D.

Neurosurgical Fellow

Department of Neurosurgery

University of Pittsburgh School of Medicine

Pittsburgh, Pennsylvania 15213

Thomas G. Benedek, M.D.

Professor of Medicine and History of Medicine

University of Pittsburgh School of Medicine

1130 Wightman Street

Pittsburgh, Pennsylvania 15217

Paul Berman, M.D.

Internist

Cooley Dickinson Hospital

Northampton, Massachusetts 01060

Anne-Emanuelle Birn, M.A.

Doctoral Candidate

The Johns Hopkins University School of Hygiene and Public Health

Baltimore, Maryland 21205

Bonnie Ellen Blustein, Ph.D.

Independent Scholar

915 West Sheridan Road

Chicago, Illinois 60613

Thomas Neville Bonner, Ph.D.

Distinguished Professor of History

Wayne State University

Detroit, Michigan 48202

Charlotte G. Borst, Ph.D.

Assistant Professor of History

University of Alabama at Birmingham

Birmingham, Alabama 35294

Inci A. Bowman, Ph.D.

Curator, Blocker History of Medicine Collections

Moody Medical Library

The University of Texas Medical Branch

Galveston, Texas 77555-1035

James O. Breeden, Ph.D.

Professor of History

Southern Methodist University

Dallas, Texas 75275

Gert H. Brieger, M.D., Ph.D.

Professor

Department of the History of Medicine, Science, and Technology

The Johns Hopkins University

Baltimore, Maryland 21205

Barbara Brodie, Ph.D., R.N.

Professor of Nursing

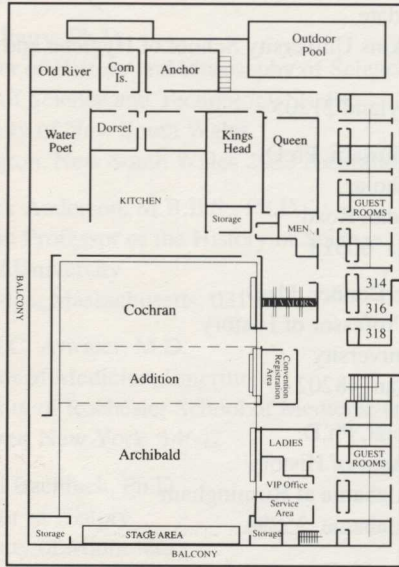
University of Virginia School of Nursing

Charlottesville, Virginia 22903



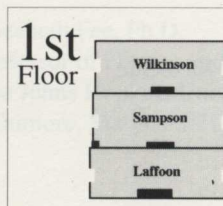
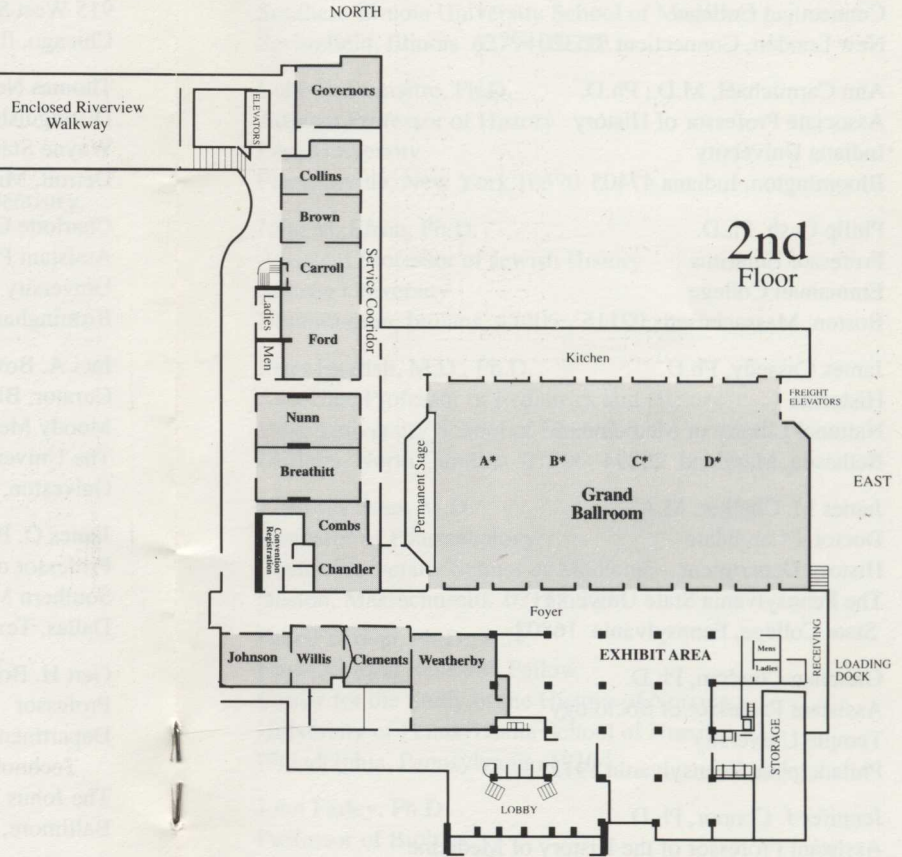
# THE GALT HOUSE

3rd Floor



# GALT HOUSE EAST

2nd Floor



SOUTH





Theodore M. Brown, Ph.D.

Professor of History  
University of Rochester  
Rochester, New York 14627

Barbara L. Brush, M.S.N., R.N.

Doctoral Candidate  
University of Pennsylvania School of Nursing  
Philadelphia, Pennsylvania 19104

Susan L. Burns

Doctoral Candidate (University of Chicago)  
Instructor of History  
Connecticut College  
New London, Connecticut 06320

Ann Carmichael, M.D., Ph.D.

Associate Professor of History  
Indiana University  
Bloomington, Indiana 47405

Philip Cash, Ph.D.

Professor Emeritus  
Emmanuel College  
Boston, Massachusetts 02115

James Cassedy, Ph.D.

Historian  
National Library of Medicine  
Bethesda, Maryland 20894

James M. Chalker, M.A.

Doctoral Candidate  
History Department  
The Pennsylvania State University  
State College, Pennsylvania 16802

Gretchen Condran, Ph.D.

Assistant Professor of Sociology  
Temple University  
Philadelphia, Pennsylvania 19122

Jennifer J. Connor, Ph.D.

Assistant Professor of the History of Medicine  
The University of Western Ontario  
London, Ontario N6A 5C1 Canada

Harold J. Cook, Ph.D.

Associate Professor of the History of Medicine  
University of Wisconsin - Madison  
Madison, Wisconsin 53706

Judy G. Cornett

Instructor  
Department of History  
University of Kentucky  
Lexington, Kentucky 40506

Glen W. Davidson, Ph.D.

Vice-President for Academic Affairs  
Doane College  
Crete, Nebraska 68333

Phillip V. Davis, Ph.D.

Director, Pearson Museum  
Southern Illinois University School of Medicine  
Springfield, Illinois 62794-19230

Luke E. Demaitre, Ph.D.

Adjunct Professor of History  
Pace University  
Pleasantville, New York 10570

John M. Efron, Ph.D.

Assistant Professor of Jewish History  
Indiana University  
Bloomington, Indiana 47405

Peter English, M.D., Ph.D.

Associate Professor of Pediatrics and History  
Duke University School of Medicine  
Durham, North Carolina 27706

J. Worth Estes, M.D.

Professor of Pharmacology  
Boston University School of Medicine  
Boston, Massachusetts 02118-2394

Julie Fairman, Ph.D., R.N.

Post-Doctoral Research Fellow  
Center for the Study of the History of Nursing  
University of Pennsylvania School of Nursing  
Philadelphia, Pennsylvania 19104

John Farley, Ph.D.

Professor of Biology  
Dalhousie University  
Halifax, Nova Scotia B3H 4H7 Canada

Elizabeth Fee, Ph.D.

Professor of History and Health Policy  
The Johns Hopkins University School of Public Health  
Baltimore, Maryland 21205



Chris Feudtner  
M.D./Doctoral Candidate  
History and Sociology of Science  
University of Pennsylvania  
Philadelphia, Pennsylvania 19104-6310

Eugene S. Flamm, M.D.  
Charles Harrison Frazier Professor and Chairman of  
Neurosurgery  
University of Pennsylvania  
Philadelphia, Pennsylvania 19104

David L. Freeman, M.D.  
Harvard Community Health Plan  
26 City Hall Mall  
Medford, Massachusetts 02155

Vanessa Northington Gamble, M.D., Ph.D.  
Assistant Professor of the History of Medicine  
University of Wisconsin School of Medicine  
Madison, Wisconsin 53706

Daniel H. Garrison, Ph.D.  
Associate Professor of Classics  
Northwestern University  
Evanston, Illinois 60208-2200

Judith Giesberg-Fierros  
Doctoral Candidate  
History Department  
Boston College  
Chestnut Hill, Massachusetts 02167

Arline T. Golkin, Ph.D.  
Lecturer in History  
Los Angeles Pierce College  
Woodland Hills, California 91371

James Tait Goodrich, M.D., Ph.D.  
Associate Professor of Neurological Surgery, Pediatrics, and  
Plastic and Reconstructive Surgery  
Albert Einstein College of Medicine  
111 East 210th St.  
Bronx, New York 10467

Ralph C. Gordon, M.D., M.A.  
Professor of Pediatrics and Human Development (Michigan  
State University)  
and Adjunct Professor of History (Western Michigan  
University)  
Kalamazoo Center for Medical Studies  
Michigan State University  
Kalamazoo, Michigan 49007

Michael R. Haines, Ph.D.  
Banfi Vintners Distinguished Professor of Economics  
Colgate University  
Hamilton, New York 13346

F. Terry Hambrecht, M.D.  
Head, Neural Prosthesis Program  
National Institutes of Health  
Bethesda, Maryland 20892

Christopher Hamlin, Ph.D.  
Assistant Professor of History  
Notre Dame University  
Notre Dame, Indiana 46556

Mervel V. Hanes, M.D.  
Associate Clinical Professor of Obstetrics and Gynecology,  
Emeritus  
University of Louisville School of Medicine  
Louisville, Kentucky 40292

Caroline Hannaway, Ph.D.  
Historical Consultant  
National Institutes of Health  
316 Suffolk Road  
Baltimore, Maryland 21218

Bert Hansen, Ph.D.  
Executive Assistant to the President for Academic Policy  
Baruch College  
Box 334, 17 Lexington Avenue  
New York, New York 10010

Victoria A. Harden, Ph.D.  
Director, NIH Historical Office  
National Institutes of Health  
Bethesda, Maryland 20892

Jon M. Harkness  
Doctoral Candidate  
Departments of the History of Medicine and Science  
University of Wisconsin - Madison  
Madison, Wisconsin 53706



Mark Harrison, Ph.D.  
Postdoctoral Fellow  
Wellcome Institute for the History of Medicine  
London NW1 2BN England

Malcolm H. Hast, M.D.  
Professor of Otolaryngology  
Northwestern University School of Medicine  
Chicago, Illinois 60611

Patricia Evridge Hill, Ph.D.  
Assistant Professor of History  
Lander University  
Greenwood, South Carolina 29649

Peter B. Hirtle, M.A., M.L.S.  
Archival Specialist  
National Archives and Records Administration  
Washington, D.C. 20408

Joel D. Howell, M.D., Ph.D.  
Associate Professor of Internal Medicine and History  
University of Michigan  
Ann Arbor, Michigan 48109-0376

Sally Smith Hughes, Ph.D.  
Regional Oral History Office  
Bancroft Library  
University of California at Berkeley  
Berkeley, California 94720

Elizabeth E. Hunt  
Doctoral Candidate  
Department of History and Sociology of Science  
University of Pennsylvania  
Philadelphia, Pennsylvania 19104-6310

John F. Hutchinson, Ph.D.  
Professor of History  
Simon Fraser University  
Burnaby, British Columbia V5A 1S6 Canada

Sandra A. Jahn  
Doctoral Candidate  
Department of History  
University of Minnesota  
Minneapolis, Minnesota 55455

Kathleen W. Jones, Ph.D.  
Assistant Professor of History  
Virginia Polytechnic Institute and State University  
Blacksburg, Virginia 24061-0117

Daniel P. Jones, Ph.D.  
Program Officer, Division of Research Programs  
National Endowment for the Humanities  
Washington D.C. 20506

Gerry Kearns, Ph.D.  
Assistant Professor of Geography  
University of Wisconsin  
Madison, Wisconsin 53706-1491

Arthur Keeney, M.D.  
Professor of Ophthalmology and Dean Emeritus  
University of Louisville School of Medicine  
Louisville, Kentucky 40292

Jodi Koste, M.A.  
Archivist, Tompkins McCaw Library  
Virginia Commonwealth University  
Richmond, Virginia 23284

Nathan Kravis, M.D.  
141 E. 55th St., Suite 2F  
New York, New York 10022

Jerome Kroll, M.D.  
Professor of Psychiatry  
University of Minnesota Medical School  
Minneapolis, Minnesota 55455

Howard I. Kushner, Ph.D.  
Professor of History  
San Diego State University  
San Diego, California 92182

Ann F. LaBerge, Ph.D.  
Assistant Professor  
Center for Programs in the Humanities  
Virginia Polytechnic Institute and State University  
Blacksburg, Virginia 24061

Harold D. Langley, Ph.D.  
Curator of Naval History  
Smithsonian Institution  
Washington, D.C. 20560

Dorothy I. Lansing, M.D.  
Archivist and Historian  
Obstetrical Society of Philadelphia  
Box 537  
Paoli, Pennsylvania 19301



Judith Walzer Leavitt, Ph.D.  
Professor of the History of Medicine  
University of Wisconsin at Madison  
Madison, Wisconsin 53706

Susan E. Lederer, Ph.D.  
Assistant Professor of Humanities  
Milton S. Hershey Medical Center  
Pennsylvania State University  
Hershey, Pennsylvania 17033-0850

Barron H. Lerner, M.D., M.A.  
Robert Wood Johnson Clinical Scholar  
University of Washington  
Seattle, Washington 98105

Lawrence D. Longo, M.D.  
Professor of Obstetrics and Gynecology  
Division of Perinatal Biology  
Loma Linda University School of Medicine  
Loma Linda, California 92350

Mary Ellen McElligott  
Education Coordinator, Pearson Museum  
Southern Illinois University School of Medicine  
Springfield, Illinois 62794-19230

Charles B. MacMartin  
Doctoral Candidate  
Department of History  
Columbia University  
New York, New York 10027

Michael R. McVaugh, Ph.D.  
Professor of History  
University of North Carolina  
Chapel Hill, North Carolina 27599-3195

Donald L. Madison, M.D.  
Professor of Social Medicine  
University of North Carolina School of Medicine  
Chapel Hill, North Carolina 27599

Howard Markel, M.D.  
Fellow and Doctoral Candidate  
Department of the History of Medicine, Science, and  
Technology  
The Johns Hopkins University  
Baltimore, Maryland 21205-2169

Harry M. Marks, Ph.D.  
Assistant Professor  
Department of the History of Medicine, Science, and  
Technology  
The Johns Hopkins University  
Baltimore, Maryland 21205-2169

Porter Mayo, M.D., Ph.D.  
Professor of Surgery  
University of Kentucky School of Medicine  
Lexington, Kentucky 40506

Richard Meckel, Ph.D.  
Associate Professor of American Civilization  
Brown University  
Providence, Rhode Island 02912

Marcia L. Meldrum  
Doctoral Candidate  
Department of History  
State University of New York at Stony Brook  
Stony Brook, New York 11794-4348

Janet Murray, B.A.  
Research Assistant  
Dalhousie University  
Halifax, Nova Scotia B3H 4H7 Canada

T. J. Murray, M.D.  
Professor of Medical Humanities  
Dalhousie University  
Halifax, Nova Scotia B3H 4H7 Canada

William J. Novak, Ph.D.  
Assistant Professor of History  
University of Chicago  
Chicago, Illinois 60637

Cornelius O'Boyle, Ph.D.  
Assistant Professor  
Program in Liberal Studies  
Notre Dame University  
Notre Dame, Indiana 46617

Gerald G. Osborn, D.O., M.Phil.  
Associate Professor of Psychiatry and Medicine  
Adjunct Associate Professor of History  
Michigan State University  
East Lansing, Michigan 48824-1316



Michael Osborne, Ph.D.  
Assistant Professor of History and Environmental Studies  
University of California, Santa Barbara  
Santa Barbara, California 93106

Michael L. Palmer, M.D.  
Department of Surgical Oncology and Endoscopy  
Roswell Park Cancer Institute  
Buffalo, New York 14263-0001

W. Robert Penman, M.D.  
Clinical Assistant Professor of Obstetrics and Gynecology  
Thomas Jefferson Medical College  
Philadelphia, Pennsylvania 19107

Wade E. Pickren, M.S.  
Doctoral Candidate  
Department of Psychology  
University of Florida  
Gainesville, Florida 32611

Samuel H. Preston, Ph.D.  
Frederick J. Warren Professor of Demography and Professor  
of Sociology  
University of Pennsylvania  
Philadelphia, Pennsylvania 19104

Sandra Crouse Quinn, Ph.D.  
Research Associate  
Minority Health Research Laboratory  
Department of Health Education  
University of Maryland  
College Park, Maryland 20782

Matthew Ramsey, Ph.D.  
Associate Professor of History  
Vanderbilt University  
Nashville, Tennessee 37235

Leslie J. Reagan, Ph.D.  
Assistant Professor of History  
University of Illinois at Urbana-Champaign  
Urbana, Illinois 61801

Susan M. Reverby, Ph.D.  
Whitehead Associate Professor of Critical Thought and  
Chair, Women's Studies Department  
Wellesley College  
Wellesley, Massachusetts 02139

James C. Riley, Ph.D.  
Professor of History  
Indiana University  
Bloomington, Indiana 47405

Guenter Risse, M.D., Ph.D.  
Professor and Chair  
Department of the History of the Health Sciences  
University of California - San Francisco  
San Francisco, California 94143

Nancy Rockafellar, Ph.D.  
Historian, Group Health Cooperative of Puget Sound  
521 Wall Street  
Seattle, Washington 98121

Charles E. Rosenberg, Ph.D.  
Professor and Chair  
History and Sociology of Science  
University of Pennsylvania  
Philadelphia, Pennsylvania 19104

Barbara G. Rosenkrantz, Ph.D.  
Professor of the History of Science  
Harvard University  
Cambridge, Massachusetts 02138

David J. Rothman, Ph.D.  
Bernard Schoenberg Professor of Social Medicine and  
Professor of History  
Center for the Study of Society and Medicine  
Columbia College of Physicians and Surgeons  
New York, New York 10032

Sheila M. Rothman, Ph.D.  
Research Scholar  
Center for the Study of Society and Medicine  
Columbia College of Physicians and Surgeons  
New York, New York 10032

Christopher J. Ruttly  
Doctoral Candidate  
Department of History  
University of Toronto  
Toronto, Ontario M5S 1A1 Canada

Jonathan Sadowsky  
Doctoral Candidate  
Department of History  
The Johns Hopkins University  
Baltimore, Maryland 21218



Todd Savitt, Ph.D.

Professor of Medical Humanities  
East Carolina University College of Medicine  
Greenville, North Carolina 27858

Clark T. Sawin, M.D.

Chief, Endocrine-Diabetes Section  
Boston V.A. Medical Center  
150 S. Huntington Avenue  
Boston, Massachusetts 02130

Walton O. Schalick, III

M.D./Doctoral Candidate  
Department of the History of Medicine, Science, and  
Technology  
The Johns Hopkins University  
Baltimore, Maryland 21205-2169

J. Lee Sedwitz, M.D.

Clinical Professor of Surgery  
East Carolina University School of Medicine  
Greenville, North Carolina 27858

Carolyn G. Shapiro

Doctoral Candidate  
Section of the History of Medicine  
Yale University School of Medicine  
New Haven, Connecticut 06510-8015

Susan L. Smith, Ph.D.

Assistant Professor of History and Women's Studies  
University of Alberta  
Edmonton, Alberta T6G 2H4 Canada

Lynne Page Snyder, M.A.

Doctoral Candidate  
Department of History and Sociology of Science  
University of Pennsylvania  
Philadelphia, Pennsylvania 19104-6310

Peggy Steele, M.S.

Acting Director  
Office of Library Systems  
University of Louisville Libraries  
Louisville, Kentucky 40292

Rosemary A. Stevens, Ph.D.

Dean and Thomas S. Gates Professor  
School of Arts and Sciences  
University of Pennsylvania  
Philadelphia, Pennsylvania 19104

Sylvan E. Stool, M.D.

Professor of Otolaryngology and Pediatrics  
Children's Hospital of Pittsburgh  
Pittsburgh, Pennsylvania 15213

Steven M. Stowe, Ph.D.

Associate Professor of History  
Indiana University  
Bloomington, Indiana 47405

Molly Sutphen

Doctoral Candidate  
Section of the History of Medicine  
Yale University School of Medicine  
New Haven, Connecticut 06510-8015

Nancy M. Theriot, Ph.D.

Associate Professor of History  
University of Louisville  
Louisville, Kentucky 40292

Stephen B. Thomas, Ph.D.

Associate Professor of Community Health and Director,  
Minority Health Research Laboratory  
Department of Health Education  
University of Maryland  
College Park, Maryland 20782

Janet A. Tighe, Ph.D.

Adjunct Assistant Professor  
American Civilization Department  
University of Pennsylvania  
Philadelphia, Pennsylvania 19104

Daniel P. Todes, Ph.D.

Associate Professor  
Department of the History of Medicine, Science, and  
Technology  
The Johns Hopkins University  
Baltimore, Maryland 21205-2169

Jonathan D. K. Trager, M.D.

Resident in Pediatrics  
Children's Hospital of Pittsburgh  
Pittsburgh, Pennsylvania 15213

Walter J. Vanast, M.D., M.A.

Doctoral Candidate  
Department of the History of Science  
University of Wisconsin - Madison  
Madison, Wisconsin 53703



Martha H. Verbrugge, Ph.D.  
Professor of History  
Bucknell University  
Lewisburg, Pennsylvania 17837

John Harley Warner, Ph.D.  
Professor of the History of Medicine  
Section of the History of Medicine  
Yale University School of Medicine  
New Haven, Connecticut 06510-8015

Ronald F. White, Ph.D.  
Assistant Professor of Philosophy  
College of Mount Saint Joseph  
Cincinnati, Ohio 45233

Suzanne R. White, Ph.D.  
Historian, U.S. Food and Drug Administration  
Rockville, Maryland 20857

Elizabeth A. Williams, Ph.D.  
Associate Professor of History  
Oklahoma State University  
Stillwater, Oklahoma 74074

## OFFICERS OF THE ASSOCIATION

Charles E. Rosenberg, President  
Thomas G. Benedek, Vice-President  
J. Worth Estes, Secretary-Treasurer

## COUNCIL MEMBERS

### Term Expires 1993

Peter C. English  
Robert U. Massey  
Rosemary A. Stevens  
Nancy Whitten Zinn

### Term Expires 1994

Elizabeth Fee  
Patsy Gerstner  
Joel Howell  
Lawrence D. Longo

### Term Expires 1995

Vanessa N. Gamble  
Steven C. Martin  
Ellen S. More  
Martin S. Pernick

## LIVING PAST PRESIDENTS

Owsei Temkin  
Saul Jarcho  
Whitfield J. Bell, Jr.  
John B. Blake  
Lester S. King  
John Duffy  
Genevieve Miller  
Gert H. Brieger  
James H. Cassidy  
Robert P. Hudson  
Jeanne L. Brand  
Guenter B. Risse  
John C. Burnham



## **PROGRAM COMMITTEE**

Nancy J. Tomes, Chair  
Ann G. Carmichael  
Eugene H. Conner  
Jacalyn M. Duffin  
John M. Eyler  
W. Bruce Fye  
Ramunas Kondratas

## **LOCAL ARRANGEMENTS COMMITTEE**

Eugene H. Conner, Co-Chair  
Arthur H. Keeney, Co-Chair  
Billy F. Andrews  
Adam Blatner  
Mary Lou Conner  
William C. DeVries  
Leonard M. Eddy  
Jonathon Erlen  
James W. Harkess  
Douglas M. Haynes  
Virginia T. Keeney  
Robert L. Keisler  
Blaine Lewis  
Charles T. Lucas  
J. David McNeely  
Charles R. Oberst  
Norma M. Oberst  
William H. Olson  
Sherrill Redmon  
John F. Rice  
John J. Schwab  
Edward W. L. Scofield  
Tiffany Scofield  
Gabriel Smilkstein  
Charles C. Smith, Jr.  
Greg S. Steinbock  
R. Ted Steinbock  
James L. Sublett  
Morris M. Weiss  
W. Michael Williams

## **SPONSORS**

On behalf of the AAHM, the Local Arrangements Committee express their gratitude to the following sponsors:

### **CORPORATE:**

Alliant Health Systems, Inc.  
Baptist Hospital East  
G.E. Medical Systems  
Humana Inc.  
Innominate Society of Louisville  
Medical Foundation of the Jefferson County Medical Society  
Jewish Hospital Corporation  
Medic Computer Systems  
Medical Staff, Humana Hospital, Audubon  
Medtronics  
South Central Bell  
University of Louisville, School of Medicine

### **INDIVIDUAL:**

Adam Blatner  
Billy F. Andrews  
Eugene H. Conner  
William C. De Vries  
James W. Harkess  
Arthur V. Keeney  
Virginia T. Keeney  
Harold E. Kleinert  
William H. Olson  
John J. Schwab  
Charles C. Smith, Jr.  
W. Michael Williams

### **FUTURE AAHM MEETINGS**

1994 New York, New York (28 April - 1 May)  
1995 Pittsburgh, Pennsylvania (11 - 14 May)  
1996 Buffalo, New York (TBA)

## ANTIQUARIAN BOOK SELLERS

ARS Medica, New York, NY  
Bohemian Brigade Bookshop  
Knoxville, TN  
Webb Dordick  
Somerville, MA  
Edward G. Glasser  
Sausalito, CA  
Alex Peck, Antiquarian Scientifica  
Charleston, IL  
Nigel Phillips  
Putney, London, England  
Bruce Ramer, New York, NY  
B&L Rootenberg,  
Sherman Oaks, CA  
Scientia  
Arlington, MA

## BOOK PUBLISHERS

### *Table Exhibits:*

Gryphon Editions, New York, NY  
Johns Hopkins University Press, Baltimore, MD  
Science History Publications, Nantucket, MA  
University of Pennsylvania Press, Philadelphia, PA  
Wellcome Institute for the History of Medicine, London  
England

### *Publishers Exhibiting with order forms for purchase:*

American Chemical Society, Washington, DC  
Cambridge University Press, New York, NY  
Coronado Press, Lawrence, KS  
Editions, Rodopi V.B., Amsterdam, The Netherlands  
Greenwood Publishing Group, Inc., Westport, CT  
Indiana University Press, Bloomington, IN  
International University Press, Inc., Madison, CT  
Kent State University Press, Kent, OH  
Krieger Publishing Co., Melbourne, FL  
Les Editions du Spinx, Sillery, Quebec, Canada  
Louisiana State University Press, Baton Rouge, LA  
McGill-Queens University Press, Montreal, Quebec,  
Canada  
McGraw-Hill, Inc. New York, NY  
Midewiwin Press, St. Paul, MN  
MIT Press, Cambridge, MA  
Norman Publishing Co., San Francisco, CA  
Ohio State University Press, Columbus, OH  
Oxford University Press, Cary, NC

Paradigm Publications, Brookline, MA  
Princeton University Press, Princeton, NJ  
Rutgers University Press, New Brunswick, NJ  
Southern Illinois University Press, Carbondale, IL  
The Scholars Choice, Rochester, NY  
University of Alabama Press, Tuscaloosa, AL  
University of Oklahoma Press, Norman, OK  
University Press of Kentucky, Lexington, KY  
University of Tennessee Press, Knoxville, TN  
University of Wisconsin Press, Madison, WI  
Verlage Muller und Schindler, Stuttgart Germany  
Women's Studies, University of Wisconsin System,  
Madison, WI  
Wood Library-Museum of Anesthesiology, Park Ridge, IL

## LOGO

The building appearing in the logo has been redrawn from an early woodcut of the Louisville Medical Institute, which was designed and built, 1837-1838, by Gideon Shryock, city architect.